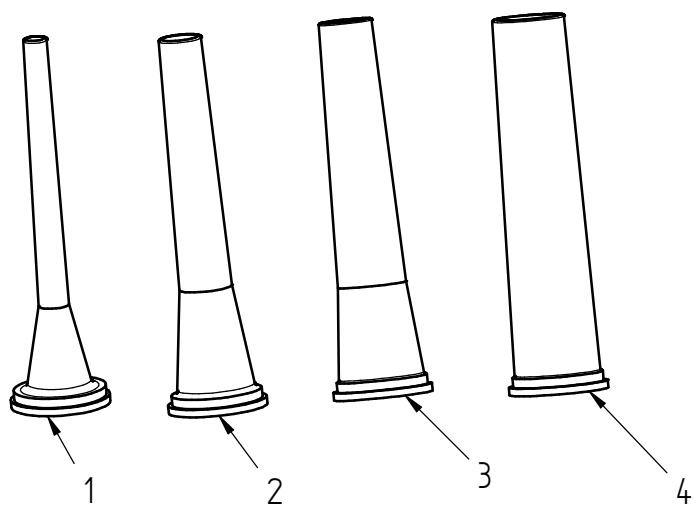
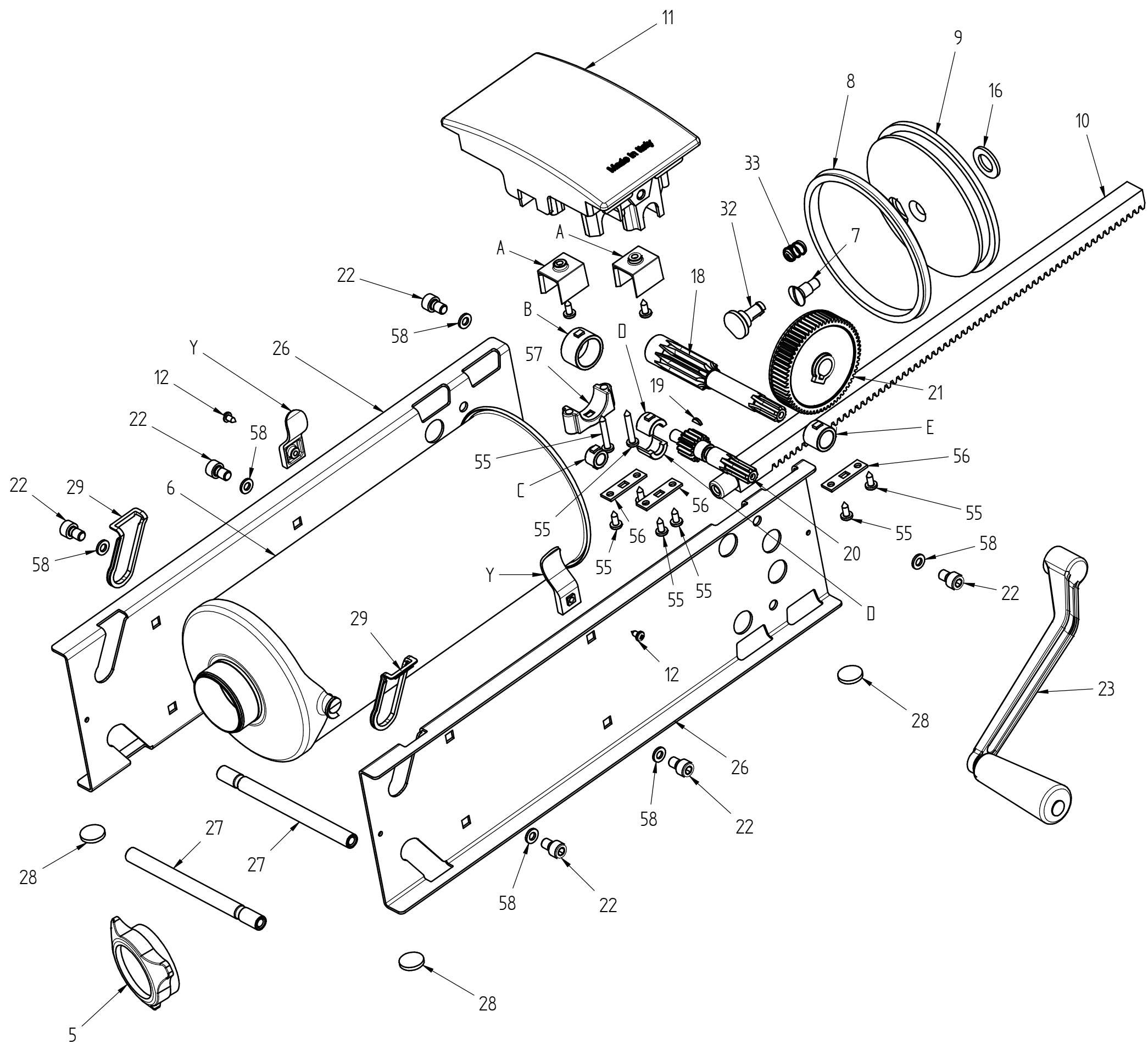


MOD. STAR 5
MOD. STAR 8
MOD. STAR 5 INOX
MOD. STAR 8 INOX



$A+B+C+D+E= 44$
 $(Y \times 2)= 13$
 $13+(28 \times 4)= 128$
 $8+9= 108$
 $32+33=132$
 $(29 \times 2)= 129$